

XTDRDC-1000 SERIES
1000 WATT SINGLE OUTPUT
DC-DC CONVERTER
11.61" x 5" x 1.61"
12 VDC INPUT

APPLICATIONS

The XTDRDC-1000 series of DC-DC Converter provides highly regulated output power up to 1000 watts. Rugged construction and superior quality make this DC-DC Converter ideal for harsh environment applications. Available in standard, modified or fully custom configurations, for industrial, commercial, COTS, ruggedized and Military applications.



STANDARD FEATURES

- Wide Range Input, 125 - 350 VDC
- Rugged, Low Profile
- Built In DC Fan for Cooling
- Current Share Function
- DC Good Signal
- Remote On/Off & Remote Sense Functions
- High Reliability / Superior Quality

AVAILABLE OPTIONS

- Hot Swap
- Parallel Operation
- ORing Diode for Redundant Operation
- Rack / Panel Mount
- Ruggedized for shock & vibration
- Conformal Coating

SAFETY AND EMISSIONS

- Designed to meet UL/cUL60950-1
- Designed to meet TUV EN60950-1
- Designed to meet CB Report (IEC 60950-1)
- Designed to meet CE Mark (LVD)
- Designed to meet EN55022 Class B (CISPR 22 B)

SPECIFICATIONS

INPUT SPECIFICATIONS:

Input: 125 - 350 VDC
Inrush Current: 40A Max
Efficiency: 85% typical (depending on output model)
Hold-up time: 16ms at full load (minimum)

OUTPUT SPECIFICATIONS

Minimum Load: none
Regulation: Line $\pm 0.5\%$ Load $\pm 0.5\%$
Ripple/Noise: 150mV - 200mV peak to peak maximum (20 MHz)
Set Point Accuracy: $\pm 1\%$ (except 5V $\pm 2\%$) (maximum)
Output voltage adj: $\pm 10\%$ minimum
Overcurrent Protection: 105-125% automatic recovery Constant Current
Overvoltage Protection: 115-140% of V1 nominal
Overtemperature Protection: Heatsink Temp. 90°C $\pm 5^\circ\text{C}$ Auto Recovery

ENVIRONMENTAL SPECIFICATIONS

Operating Temperature: -20°C to +50°C. Derate to 50% at +70°C
Storage Temperature: -40°C to +85°C max 95% Relative Humidity
Cooling: Internal ball bearing DC fan
Humidity: 20-90% RH non condensing
Vibration: 10-500Hz, 2G 10min/1cycle for 60 min (3 axes)
Shock: 20G Peak Acceleration
Weight: Approx: 4 LBS
Size: 11.61" x 5" x 1.61"



NSF-ISR

Registered
to ISO 9001

MODEL SELECTION

MODEL NUMBER	VOLTAGE	CURRENT
XTDRDC-1000-12	12V	60A
XTDRDC-1000-15	15V	50A
XTDRDC-1000-24	24V	40A
XTDRDC-1000-28	28V	37A
XTDRDC-1000-48	48V	21A

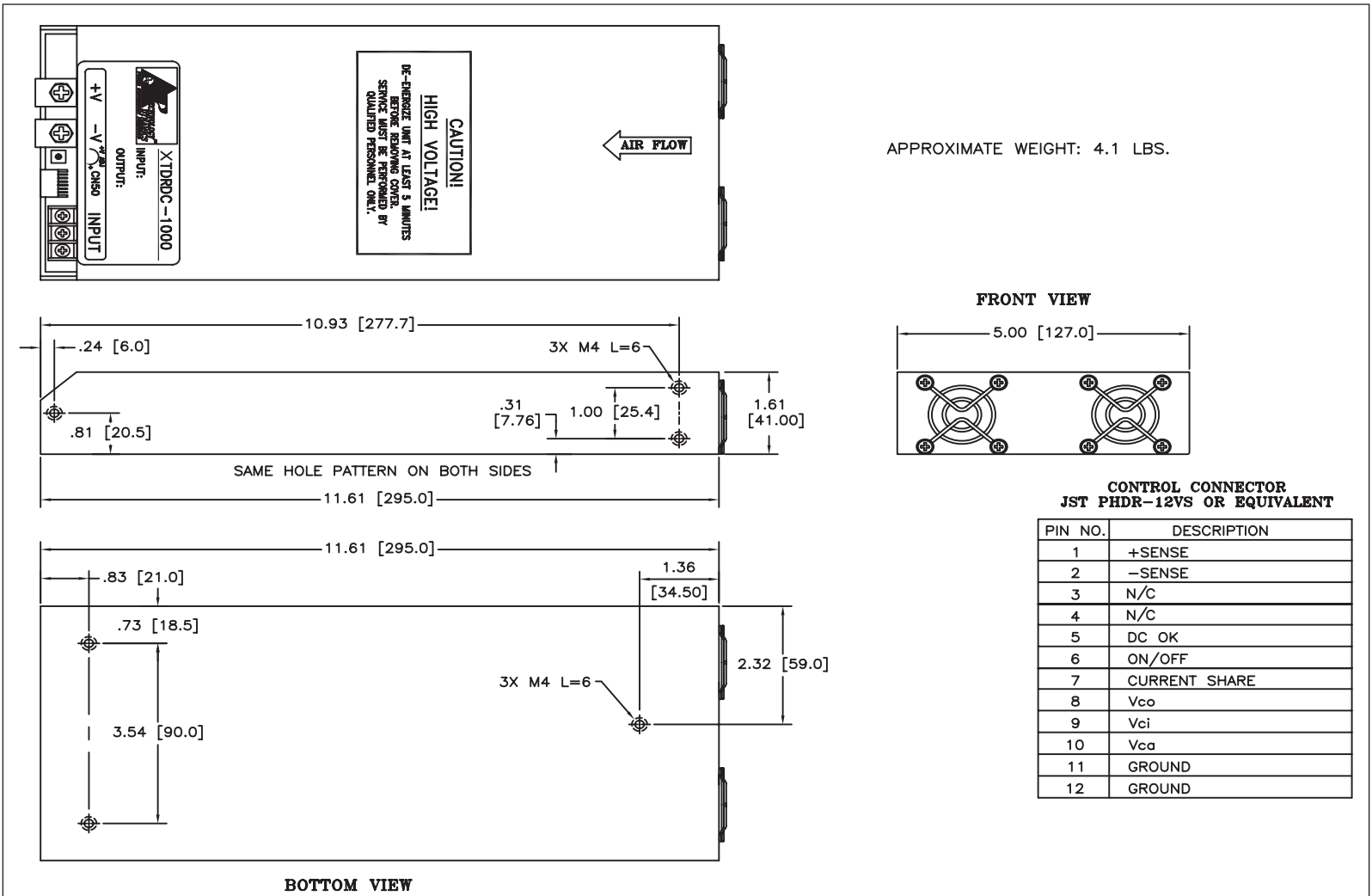
NOTE: OTHER VOLTAGES & CURRENTS AVAILABLE. CONSULT THE FACTORY.

OPTION DESIGNATIONS

- HSP	Hot Swap
- ORD	Redundant Operation
- PAR	Parallel Operation
-CC	Conformal Coating

- MIL	Ruggedized/Militarized
- PNL	Panel Mount
- RK	Rack Mount

MECHANICAL OUTLINE



Rev.-

SPECIFICATIONS ARE SUBJECT TO CHANGE WITHOUT NOTICE

TECHNOLOGY DYNAMICS INC.
100 School Street, Bergenfield, NJ 07621
Phone: (201) 385-0500, Fax: (201) 385-0702
www.technologydynamicsinc.com