

## TD-WM-BBU SERIES SINGLE OUTPUT DC UPS BATTERY BACK-UP POWER SUPPLIES RUGGED/WALL MOUNT

### APPLICATIONS

The TD-WM-BBU Series satisfies an emerging market where "critical" continuous power is required. Designed as a complete system with power supply, charger and on board batteries, loaded with standard features the TD-WM-BBU Series is ideal for military, industrial and shipboard applications.

### STANDARD FEATURES

- Rugged construction
- OV/OL/OT Protected
- Built-In Premium Batteries
- Input and Battery Circuit Breakers
- Internal Cooling Fans
- Visual and Electronic Signals
- Low Voltage Battery Disconnect.

### AVAILABLE OPTIONS

- Redundant Operation (N+1)
- MS Connectors
- 400 Hz Inputz
- EMI Reduction (MIL-STD-461)
- Conformal Coating
- 3 Phase Input
- Voltage and Current Meters
- Ruggedized for Shock & Vibration
- Spiral Shock Absorbers on Bottom for Floor Mount.
- External Batteries



### SPECIFICATIONS

#### ELECTRICAL

AC Input Voltage : 100 - 252 VAC  
AC Input Frequency: 47-63Hz Standard, 47-400Hz optional  
Regulation: Line  $\pm$  .3%  
Load:  $\pm$  2% while on AC (22 -28 V on battery)  
Ripple: 1% peak to peak, not to exceed 100mVpp  
Efficiency: 85% typical  
Output voltage adj: +10% on main output  
Overvoltage Protection: Set at 120% of main output  
Overload Protection: Current limiting, automatic recovery

#### MECHANICAL AND ENVIRONMENTAL

Operating Temperature:  
-10°C to + 50°C standard  
-40°C to 75°C optional (High purity batteries)  
Storage Temperature: Per battery limit  
Cooling: Internal ball bearing DC fan  
Safety: Designed to meet UL 1950, CSA 1402 A  
EMI: meets FCC Class A  
Humidity: 90% non condensing  
Size: 24" x 16" x 8"  
Weight: Approx: 100lbs  
(depending on battery type & size)



**NSF-ISR**

Registered  
to ISO 9001

## MODEL SELECTION

400 WATT POWER SUPPLY	
MODEL	OUTPUT
TD-WM-BBU-12-33	12V (13.5V) @ 33A
TD-WM-BBU-24-17	24V (27.6V) @ 17A
TD-WM-BBU-48-8	48V (54V) @ 8A
400 WATTS BACK-UP FOR 60 MIN	

600 WATT POWER SUPPLY	
MODEL	OUTPUT
TD-WM-BBU-12-50	12V (13.5V) @ 50A
TD-WM-BBU-24-25	24V (27.6V) @ 25A
TD-WM-BBU-48-12	48V (54V) @ 12A
600 WATTS BACK-UP FOR 50 MIN	

800 WATT POWER SUPPLY	
MODEL	OUTPUT
TD-WM-BBU-24-66	12V (27.6V) @ 66A
TD-WM-BBU-24-33	24V (27.6V) @ 33A
TD-WM-BBU-48-16	48V (54V) @ 16A
800 WATTS BACK-UP FOR 30 MIN	

1000 WATT POWER SUPPLY	
MODEL	OUTPUT
TD-WM-BBU-12-80	12V (13.5V) @ 80A
TD-WM-BBU-24-41	24V (27.6V) @ 41A
TD-WM-BBU-48-20	48V (54V) @ 20A
1000 WATTS BACK-UP FOR 15 MIN	

1500 WATT POWER SUPPLY	
MODEL	OUTPUT
TD-WM-BBU-12-125	12V (13.5V) @ 125A
TD-WM-BBU-24-63	24V (27.6V) @ 63A
TD-WM-BBU-48-32	48V (54V) @ 32A
1500 WATTS BACK-UP FOR 5 MIN	

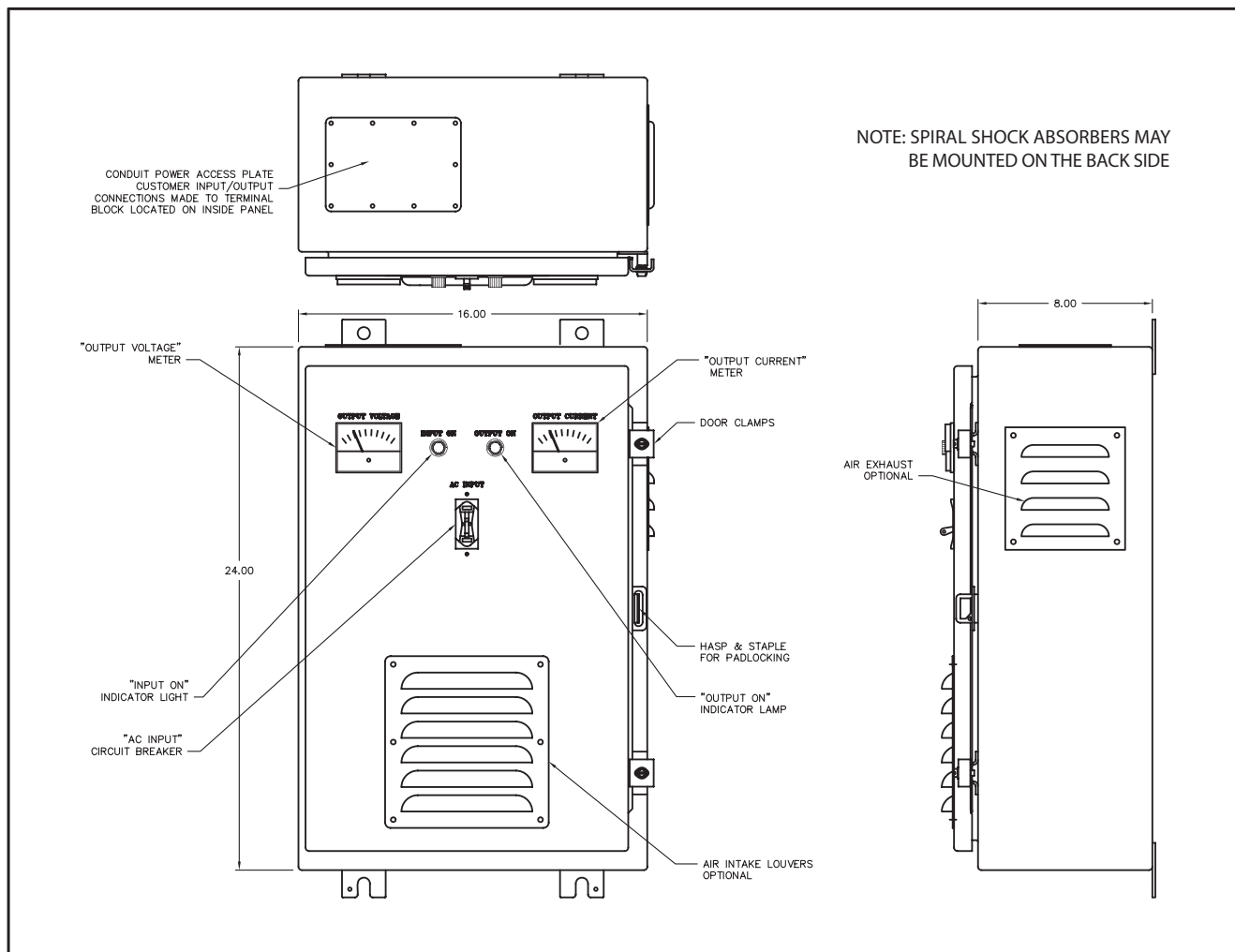
### NOTES:

ADDITIONAL SIZE BOXES ARE AVAILABLE FOR INCREASED POWER LEVELS AND BACK-UP TIMES.

MINIMUM QUANTITY PURCHASE REQUIRED ON MOST MODELS. OTHER VOLTAGES & CURRENTS ARE AVAILABLE CONTACT THE FACTORY FOR DETAILS.

SIMILAR EXTERNAL BATTERY CABINETS AVAILABLE.

## MECHANICAL OUTLINE



Rev. A

SPECIFICATIONS ARE SUBJECT TO CHANGE WITHOUT NOTICE

**TECHNOLOGY DYNAMICS INC.**  
 100 School Street, Bergenfield, NJ 07621  
 Phone: (201) 385-0500, Fax: (201) 385-0702  
[www.technologydynamicsinc.com](http://www.technologydynamicsinc.com)