

# TD-WMT SERIES 1,000-9,000 WATT High Power/ Wall Mounted SWITCHING POWER SUPPLIES

## APPLICATIONS

The TD-WMT Series of wall mount power supplies offers field proven reliability for severe environment applications including heavy duty industrial, military shipboard and ground mobile, rugged commercial and mass transit. Full customized versions with non-standard voltages and higher power outputs are also available.

## STANDARD FEATURES

- Aluminum or Steel Enclosures
- Built In Fans For Superior Cooling
- Highly Regulated DC Outputs
- Hinged Front Door Access
- Ease of Access Internal Connections
- Rugged Construction Of Electronics
- Door Locking Mechanism
- Fully Painted Exterior

## AVAILABLE OPTIONS

- Conformal Coating
- Meters
- Circuit Breaker
- Circular Connectors
- Parallel Operation
- Redundant Operation
- 400 Hz Input
- Custom Output Voltages
- Higher Power Outputs
- 3 Phase Input



## INPUT SPECIFICATIONS:

Input: Input Range (1000W) 90-132VAC/ (2000-3000W) 180-264VDC 1Ø or 3Ø, Higher Levels Contact The Factory  
 Input Frequency: 47-63Hz (400Hz Optional)  
 Line Regulation: .3% Typical  
 Load Regulation: 2%  
 Efficiency: 90% Typical (Depending On Model)  
 Hold-Up Time: 20ms At Full Load (Minimum)  
 Leakage Current: <2.0mA maximum @ 240 VAC

## OUTPUT SPECIFICATIONS:

Minimum Load: None (Typical 10%)  
 Regulation: Line  $\pm$  0.5% Load  $\pm$  0.5%  
 Ripple/Noise: 200mV Peak To Peak Maximum (20 MHz)  
 Set Point Accuracy:  $\pm$ 1%(Except 5V= $\pm$ 2%) (Maximum)  
 Overcurrent Protection: 105-125% Automatic Recovery Constant Current  
 Overvoltage Protection: 115-140% Of V1 Nominal Overtemperature Protection Heatsink Temp. 90°C  $\pm$  5°C Auto Recovery Depending On Model

## ENVIRONMENTAL SPECIFICATIONS:

Operating Temperature: -20°C to +50°C. Derate to 50% at +70°C  
 Storage Temperature: -40°C to +85°C Max  
 Cooling: Internal Ball Bearing DC Fans  
 Humidity: 20-90% RH, Non Condensing  
 Weight: Depends On Model & Configuration  
 Size: 24" x 16" x 8"

## MODEL SELECTION

### 1,000 Watts

MODEL	VDC	AMPS
TD-WMT-12-83	12V	83A
TD-WMT-24-41	24V	41A
TD-WMT-28-35	28V	35A
TD-WMT-48-20	48V	20A

### 2,000 Watts

MODEL	VDC	AMPS
TD-WMT-12-166	12V	166A
TD-WMT-24-82	24V	82A
TD-WMT-28-70	28V	70A
TD-WMT-48-40	48V	40A

### 3,000 Watts

MODEL	VDC	AMPS
TD-WMT-12-200	12V	200A
TD-WMT-24-125	24V	125A
TD-WMT-28-107	28V	107A
TD-WMT-48-62	48V	62A

### 4,000 Watts

MODEL	VDC	AMPS
TD-WMT-12-332	12 VDC	332A
TD-WMT-24-164	24 VDC	164A
TD-WMT-28-140	28 VDC	140A
TD-WMT-48-80	48VDC	80A

### 6,000 Watts

MODEL	VDC	AMPS
TD-WMT-12-498	12 VDC	498A
TD-WMT-24-246	24 VDC	246A
TD-WMT-28-214	28 VDC	214A
TD-WMT-48-120	48VDC	120A

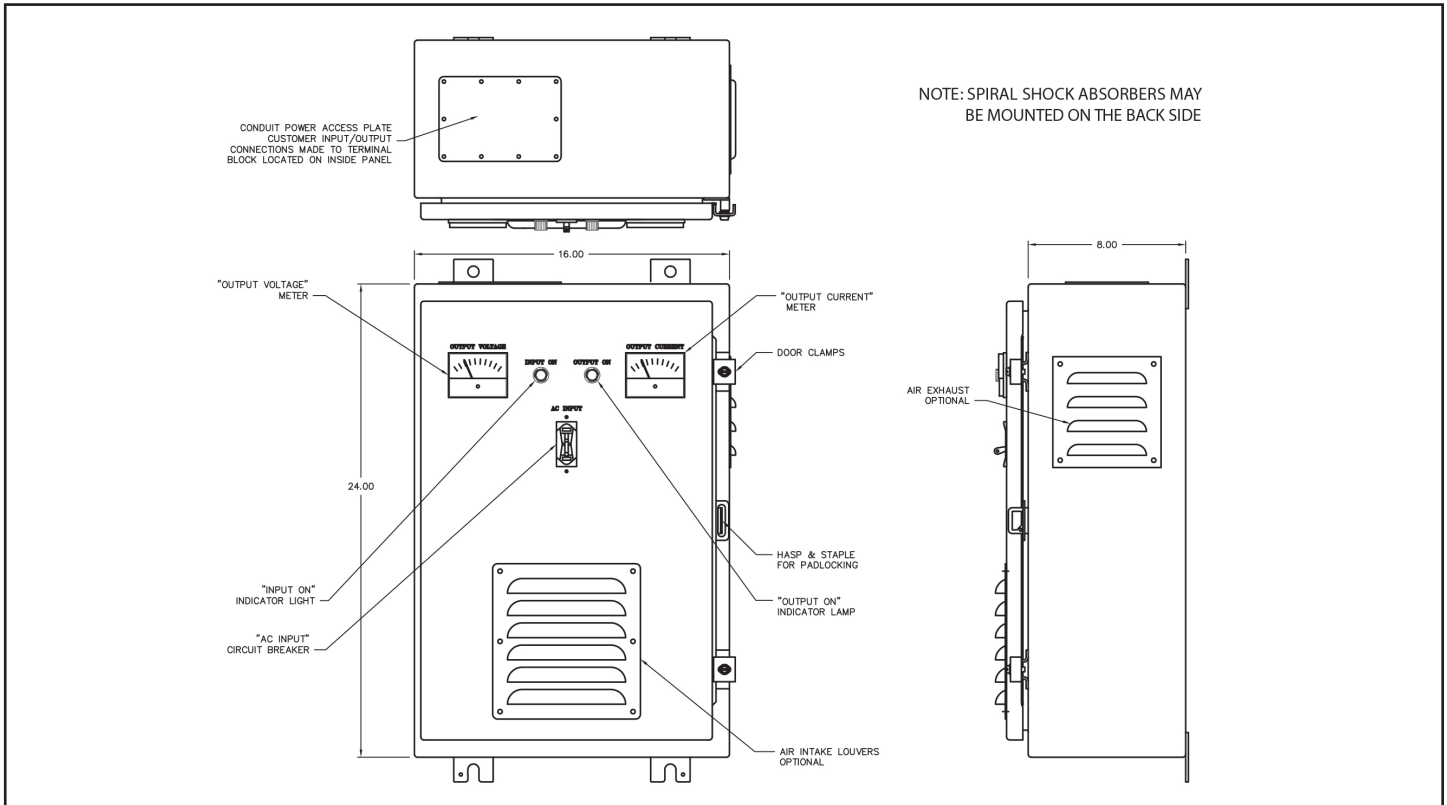
### 9,000 Watts

MODEL	VDC	AMPS
TD-WMT-24-375	24 VDC	375A
TD-WMT-28-321	28 VDC	321A
TD-WMT-48-187	48VDC	187A

### NOTES

1. Certain power levels may require larger enclosures. Please contact the factory for exact details.
2. Custom voltages, currents and enclosures are available upon request. Certain restrictions may apply.
3. Certain models may require specific input ranges. Please contact the factory for exact details.

## MECHANICAL OUTLINE



\*Shown With Optional Meters