

TD RSP-BX-3000 SERIES
3000 WATT RUGGED INDUSTRIAL
SWITCHING POWER SUPPLIES
17.63" x 10" x 6.60"
SHOCK ISOLATED, RUGGED PACKAGE

APPLICATIONS

The TD RSP-BX-3000 series of Rugged AC-DC power supplies provides output power to 3000 watts. Rugged construction and superior quality make this power supply ideal for harsh environment applications. Available in standard, modified or fully custom configurations, for industrial, mining, commercial, COTS, ruggedized and Military applications.

STANDARD FEATURES

- High Efficiency Up to 90%
- Active PFC for EN61000-3-2, -3 PF>0.95%
- Built In DC Fan for Cooling
- Current Share Function
- AC & DC Good Signals
- Remote ON/OFF & Remote Sense Functions
- 12V/100mA Auxiliary Output

AVAILABLE OPTIONS

- Parallel Operation
- ORing Diode for Redundant Operation
- Ruggedized for Shock & Vibration
- 400Hz Operation
- Conformal Coating

SAFETY AND EMISSIONS

- Designed to meet UL/cUL60950-1
- Designed to meet TUV EN60950-1
- Designed to meet CB Report (IEC 60950-1)
- Designed to meet CE Mark (LVD)
- Designed to meet EN55022 Class B (CISPR 22 B)



SPECIFICATIONS

INPUT SPECIFICATIONS:

Input: AC Input Range 180-264VAC/254-370VDC
Input Frequency: 47-63Hz
Inrush Current: 60A at 230VAC (cold start)
Input Current: 20A/180VAC, 16A/230VAC
Efficiency: 86-90% typical (depending on output model)
Hold-up time: 10ms at full load (minimum)
Leakage Current: <2.0 mA maximum @ 240 VAC
Harmonics: EN 61000-3-2, -3 Class D Compliant (0.99 PF Typical)

OUTPUT SPECIFICATIONS

Adjustment Range: $\pm 10\%$ (minimum)
Minimum Load: none
Regulation: Line $\pm 0.5\%$ Load $\pm 0.5\%$
Ripple/Noise: 150 - 200mV peak to peak maximum (20 MHz)
Set Point Accuracy: $\pm 1\%$ (except 5V = $\pm 2\%$) (maximum)
Output voltage adj: $\pm 10\%$ minimum
Overcurrent Protection: 100-112% of rated output power.
Overvoltage Protection: 115 -150% of V1 nominal
Overtemperature Protection: Heatsink Temp 90°C $\pm 5^\circ\text{C}$ Auto Recovery.

ENVIRONMENTAL SPECIFICATIONS

Operating Temperature: - 20°C to + 50°C.
Storage Temperature: -40°C to + 85°C max
Cooling: Internal ball bearing DC fan
Humidity: 20-90% RH non condensing
Vibration: 10 - 500Hz, 2G 10 min
1 cycle for 60 min (3 axes)
Shock: 20 G Peak Acceleration
Weight: Approx.: 22 LBS
Size: 17.63" x 10" x 6.60"



NSF-ISR

Registered
to ISO 9001

Design Excellence since 1976!

MODEL SELECTION

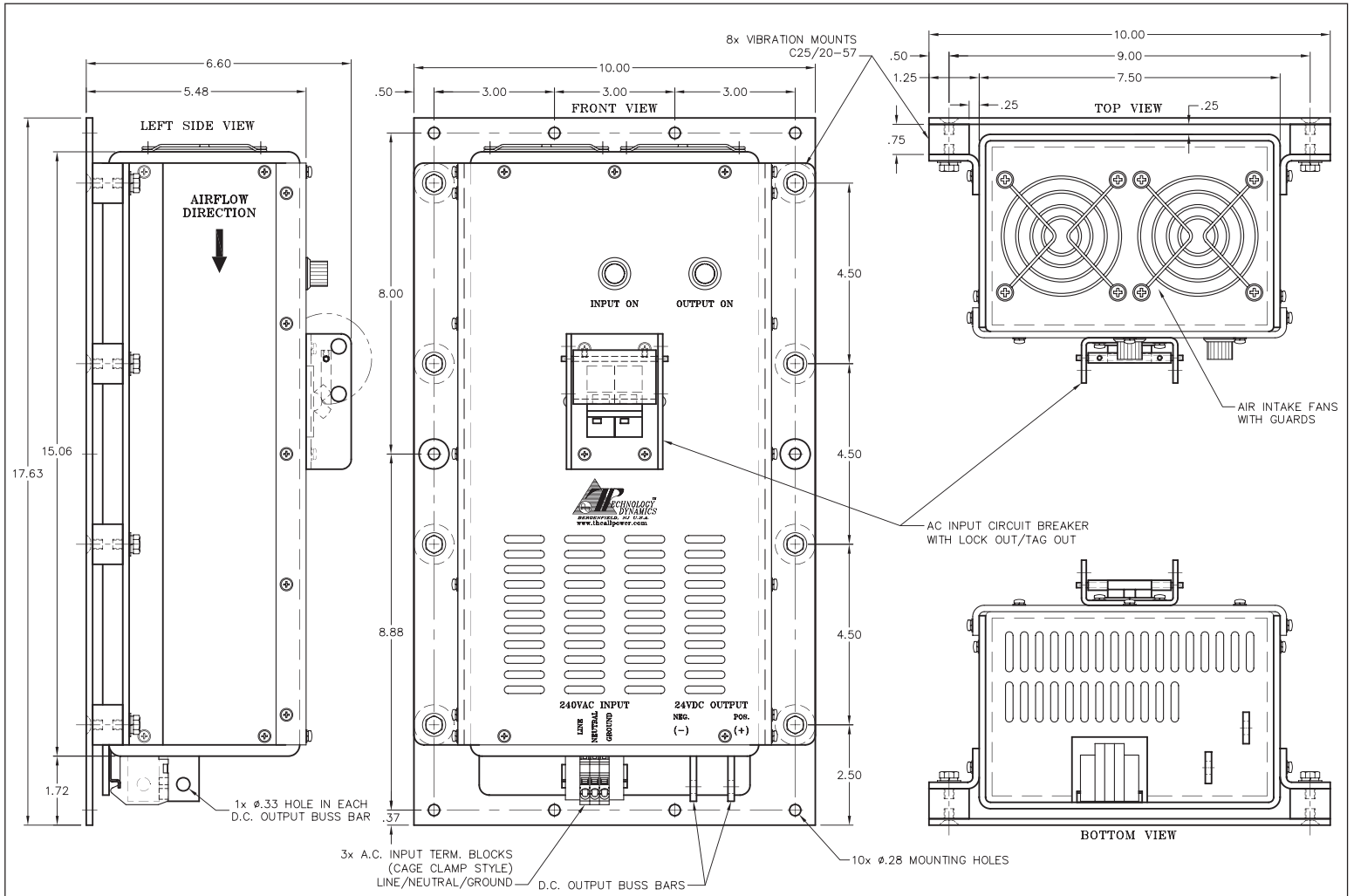
MODEL NUMBER	VOLTAGE	CURRENT
TD RSP-BX-3000-12	12V	200A
TD RSP-BX-3000-24	24V	125A
TD RSP-BX-3000-28	28V	107A
TD RSP-BX-3000-48	48V	62A

NOTE: OTHER VOLTAGES & CURRENTS AVAILABLE. CONSULT THE FACTORY.

OPTION DESIGNATIONS

- ORD	Redundant Operation
- PAR	Parallel Operation
- CC	Conformal Coating
- MIL	Ruggedized/Militarized
- 400Hz	400Hz Operation

MECHANICAL OUTLINE



Rev.A

SPECIFICATIONS ARE SUBJECT TO CHANGE WITHOUT NOTICE

TECHNOLOGY DYNAMICS INC.
 100 School Street, Bergenfield, NJ 07621
 Phone: (201) 385-0500, Fax: (201) 385-0702
www.technologydynamicsinc.com