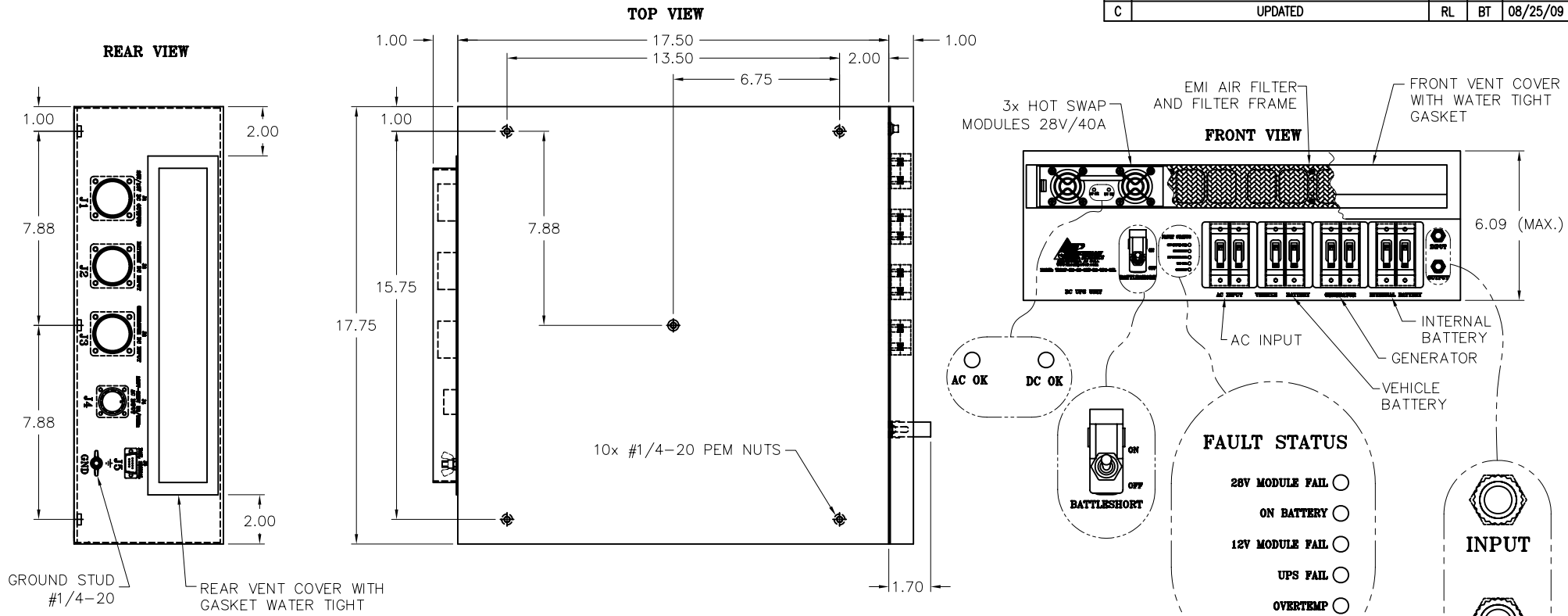


REVISIONS				
LTR	DESCRIPTION	BY	APR	DATE
A	CHANGED AS PER CUSTOMER	RL	BT	06/06/09
B	UPDATED PER CUSTOMER	RL	BT	08/01/09
C	UPDATED	RL	BT	08/25/09



- NOTES:
1. ALL DIMENSIONS ARE IN INCHES.
 2. ALL UNDIMENSIONED PICTORIAL CONFIGURATIONS ARE FOR REFERENCE ONLY.
 3. FRONT AND REAR MARKING FOR REFERENCE ONLY.
 4. FRONT PANEL FINISH: YELLOW IRRIDITE THEN PRIME & PAINT SURFACE AND ALL EDGES. PAINT COLOR: DESERT TAN + CARC. CARC PAINT PER MIL-DTL-53072. COLOR NO. 33446 (TAN 686A) PER FED-STD-595. OTHER SURFACES YELLOW IRRIDITE ONLY.
 5. APPROXIMATE WEIGHT: 65 LBS.

CONNECTORS PIN DESIGNATION

J1 28V & 12V DC OUTPUTS		J2 BATTERY DC INPUT		J3 GENERATOR DC INPUT		J4 120V-220V 50/60Hz AC INPUT		J5 9 PIN CONN. FAIL SIGNAL DE-9SMS RS232	
PIN	DESCRIPTION	PIN	DESCRIPTION	PIN	DESCRIPTION	PIN	DESCRIPTION	PIN	DESCRIPTION
CA3102E24-12SB111		CA3102E24-9PB111		CA3102E24-12PB111		CA3102E16-10PB111		1	28V MODULE FAIL
A	DC+ 28V	A	DC +	A	DC +	A	LINE	2	ON BATTERY
B	SPARE	B	DC -	B	SPARE	B	NEUTRAL	3	12V MODULE FAIL
C	DC- 28V			C	DC -	C	GROUND	4	UPS FAIL
D	DC+ 12V			D	SPARE			5	OVERTEMP
E	DC- 12V			E	SPARE			6,7	NOT USED
								8,9	SIGNALS COMMON

UNLESS OTHERWISE SPECIFIED: DIMENSIONS ARE IN INCHES FRACTIONS: DECIMALS: ANGLES: TOLERANCES: - .XX=± .02 - .XXX=± .005 ±.50°		THIS DRAWING CONTAINS PROPRIETARY INFORMATION AND MAY NOT BE REPRODUCED WITHOUT THE PERMISSION OF TECHNOLOGY DYNAMICS.		TECHNOLOGY DYNAMICS INC. 100 SCHOOL STREET BERGENFIELD, N.J. 07621-2915	
MATERIAL: -	DATE: 06/02/09	DRAWN: RL		TITLE: OUTLINE DRAWING	
FINISH: -	DATE: 06/02/09	CHECKED: B.T.		TDRSP-HS-28-3KW-X2-UPS-MIL	
	DATE: 06/02/09	APPROVED: A.L.		SIZE: C	REV: C
HTTP://WWW.THEALLPOWER.COM				SCALE: 1	CAGE: 29019 SHEET 1 OF 1