

**TD RSP-1000 SERIES**  
**1000 WATT SINGLE OUTPUT**  
**SWITCHING POWER SUPPLIES**  
**11.61" x 5" x 1.61"**  
**POWER FACTOR CORRECTED**

### APPLICATIONS

The TD RSP-1000 series of Power Factor Corrected AC-DC power supplies provides highly regulated output power to 1000 watts. Rugged construction and superior quality make this power supply ideal for harsh environment applications. Available in standard, modified or fully custom configurations, for industrial, commercial, COTS, ruggedized and Military applications.

### STANDARD FEATURES

- Universal AC Input / Full Range
- Full Range
- Built In DC Fan for Cooling
- Current Share Function
- DC Good Signal
- Remote On/Off & Remote Sense Functions
- 5V / 0.5A Auxiliary Output

### AVAILABLE OPTIONS

- Hot Swap
- Parallel Operation
- ORing Diode for Redundant Operation
- Rack / Panel Mount
- Ruggedized for shock & vibration
- 400Hz Operation
- Conformal Coating

### SAFETY AND EMISSIONS

- Designed to meet UL/cUL60950-1
- Designed to meet TUV EN60950-1
- Designed to meet CB Report (IEC 60950-1)
- Designed to meet CE Mark (LVD)
- Designed to meet EN55022  
Class B (CISPR 22 B)



### SPECIFICATIONS

#### INPUT SPECIFICATIONS:

Input: Universal AC Input Range 90-264VAC/127-370VDC  
Input Frequency: 47-63Hz  
Inrush Current: 25A max at 115VAC/40A at 230 VAC (cold start)  
Input Current: 12A max @ 115VAC 6A max @ 230VAC  
Efficiency: 83-90% typical (depending on output model)  
Hold-up time: 16ms at full load (minimum)  
Leakage Current: <2.0mA maximum @ 240 VAC  
Harmonics: EN 61000-3-2, -3 Class D Compliant (0.99 PF Typical)

#### OUTPUT SPECIFICATIONS

Adjustment Range:  $\pm 10\%$  (minimum)  
Minimum Load: none  
Regulation: Line  $\pm 0.5\%$  Load  $\pm 0.5\%$   
Ripple/Noise: 150mV peak to peak maximum (20 MHz)  
Set Point Accuracy:  $\pm 1\%$  (except 5V  $\pm 2\%$ ) (maximum)  
Output voltage adj:  $\pm 10\%$  minimum  
Overcurrent Protection: 105-125% automatic recovery Constant Current  
Overvoltage Protection: 115-140% of V1 nominal  
Overtemperature Protection: Heatsink Temp. 90°C  $\pm 5^\circ\text{C}$  Auto Recovery

#### ENVIRONMENTAL SPECIFICATIONS

Operating Temperature: -20°C to +50°C. Derate to 50% at +70°C  
Storage Temperature: -40°C to +85°C max 95% Relative Humidity  
Cooling: Internal ball bearing DC fan  
Humidity: 20-90% RH non condensing  
Vibration: 10-500Hz, 2G 10min/1cycle for 60 min (3 axes)  
Shock: 20G Peak Acceleration  
Weight: Approx: 4 LBS  
Size: 11.61" x 5" x 1.61"

AS 9100

**BUREAU VERITAS**  
Certification  
Certificate No: US008267-1



## MODEL SELECTION

MODEL NUMBER	VOLTAGE	CURRENT
TD RSP-1000-12	12V	60A
TD RSP-1000-15	15V	50A
TD RSP-1000-24	24V	40A
TD RSP-1000-28	28V	37A
TD RSP-1000-48	48V	21A

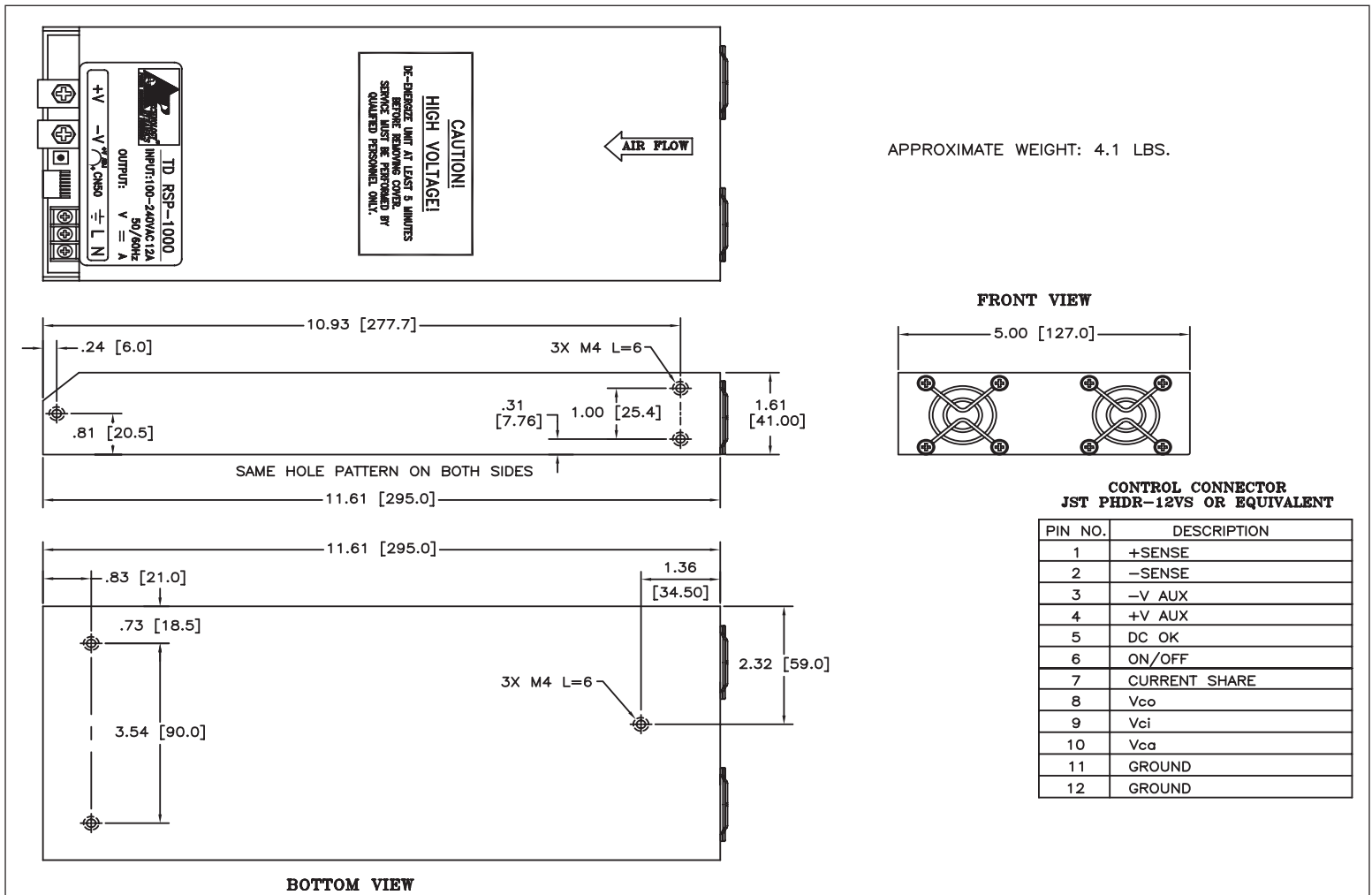
NOTE: OTHER VOLTAGES & CURRENTS AVAILABLE. CONSULT THE FACTORY.

## OPTION DESIGNATIONS

- HSP	Hot Swap
- ORD	Redundant Operation
- PAR	Parallel Operation
- CC	Conformal Coating

- MIL	Ruggedized/Militarized
- PNL	Panel Mount
- RK	Rack Mount
-4Hz	400 Hz Operation

## MECHANICAL OUTLINE



Rev.A

SPECIFICATIONS ARE SUBJECT TO CHANGE WITHOUT NOTICE

**TECHNOLOGY DYNAMICS INC.**  
100 School Street, Bergenfield, NJ 07621  
Phone: (201) 385-0500, Fax: (201) 385-0702  
[www.technologydynamicsinc.com](http://www.technologydynamicsinc.com)